

Hercules - Broadloom Entrance Matting

One of the most popular 4 x 2 ribbed products in our line.
Combines toughness with exceptional appearance retention.

Charles van Gelder Importers, Inc.

136 North Cass Street
Adairsville, GA 30103
Phone: 770.773.7109
Toll Free: 1.866.284.6287
Fax: 770.773.7120



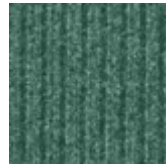
Azure



Beige



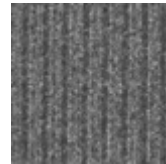
Charcoal



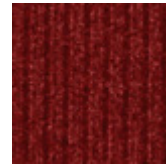
Emerald



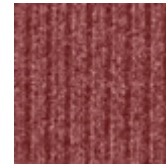
Chocolate



Silver Grey



Claret



Wildberry

Hercules Specifications

* Note - All weights and thickness quoted + or - 10%

Construction	Non woven 4 x 2 ribbed
Pile Fiber	100% solution dyed polypropylene
Face Weight	42 oz. per s/y
Backing	High density latex "Safety Track" backing
Width	6'6"
Roll Length	Approximately 80'
Wear Warranty	7 years on flat surfaces
Spike-Resistant (Excludes pivot areas)	3 years on flat surfaces
Electrostatic Propensity	Permanently anti-static



BS 476 PT7
Radiant Panel Test